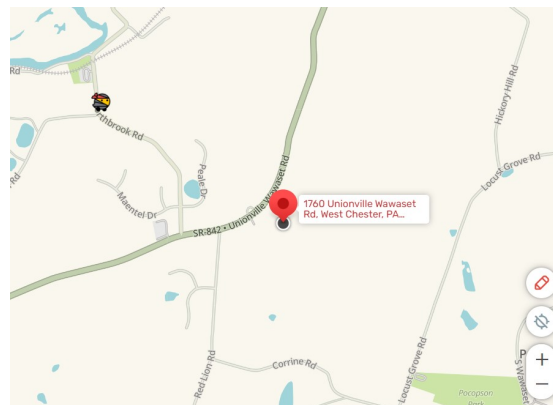




Summer Camp Policies & Procedures For Parents 2025

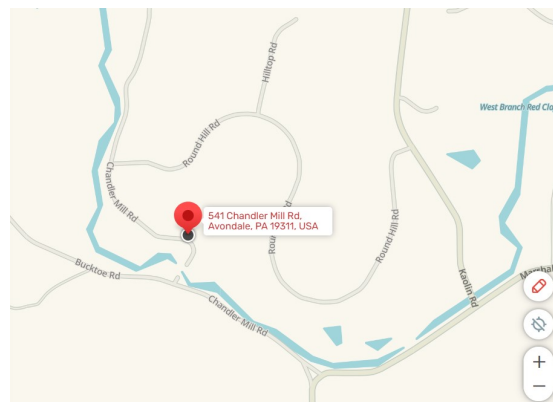
Myrick Conservation Center

1760 Unionville-Wawaset Road
West Chester, PA 19382
610-793-1090



Chandler Mill Nature Preserve

541 Chandler Mill Road
Avondale, PA 19311
610-793-1090



Please read this document carefully...it should answer any questions you have about:

- Before And After Care
- Camp Times
- Cancellation Policy
- Code Of Conduct
- Covid-19
- Dress Code
- Drop Off And Pick Up
- Field Trips (Waivers And Transportation)
- Ice Cream Socials
- Inclement Weather And Emergency Plan
- Lateness Or Absences
- Medicals Forms And Accident Procedure
- Membership
- Overnights & Cookouts
- Ticks And Poison Ivy
- What To Bring To Camp
- What To Leave At Home

“Guaranteed To Get Wet And Muddy Every Day!”

Before And After Care

- Before care runs from 7:30 a.m. – 9 a.m.
- After care runs from 3:00 p.m. - 5:30 p.m.
- If you have an urgent need for before or after care that you did not initially register for, please call the office and we will do our best to fit them in.
- Cost is \$60/week for before care and \$80/week for after care. If before or after care is needed on a daily basis, the cost is \$15/day for before care and \$20/day for after care. For the week of 7/1/24, before care is \$40 and after care is \$50.
- For before and after care only, drop off and pickup will be on barn side. Before and after care are run out of the barn. Please follow the signs.

Camp Times

- Camp runs 9:00 a.m. – 3:00 p.m. every day.
- Half day camps run 9:00 a.m. – 12:00 p.m.

Cancellation Policy

- Refunds for cancelling a camp **14 days or more prior to camp start date** will be honored, minus a \$75 per camper per camp cancellation fee.
- Refunds for cancelling a camp **less than 14 days prior to camp start date** will only not be honored.
- When switching camps, a \$35 transfer fee per camper, per camp will be charged.
- If cancellation request is due to a medical condition, a doctor's note will be required. Please call the office to cancel and discuss transfer and refund options.
- No refunds will be issued for before or after care once the week of camp begins, nor will they be issued for missed days or schedule changes.

Code Of Conduct

- Campers **must be** comfortable using port-a-potty without a parent.
- Campers are expected to act respectfully towards all staff, fellow campers, BRC property, and the natural environment.
- BRC provides an environment free from all forms of improper threats, intimidation, hostility, and offensive and inappropriate behavior ... including all forms of bullying (verbal, physical, cyber and emotional).
- Generally, BRC staff will issue a warning to camper and notify parent/guardian of any infractions during pickup. However, if the severity of the offense warrants prompt disciplinary action (or is of confidential nature), the parent/guardian will be notified as soon as possible.

Covid-19

- Now that Covid is a part of our lives, BRC maintains the right to modify our programming so that we may keep all BRC families and staff safe and healthy.
- If a child feels unwell, we may take their temperature. If their temperature is above normal, you will be contacted.

Dress Code

- Campers need to be dressed for the weather and activities. Please wear clothes that can get wet, muddy, dirty, stinky, and worn in all kinds of weather or conditions.
- Clothing that has images or text pertaining to alcohol, tobacco, illegal substance, political affiliations, or offensive language is not permitted.
- No open toed shoes.
- Please label ALL belongings so that they may be returned to their owners. By August 31st, all unclaimed items will be disposed of or donated to charity.
- Campers must be able to put on their own clothes without assistance without getting frustrated.

Drop Off And Pick Up

- Drop off begins at 8:45am.
- Pickup for half day begins at 12:00pm, pickup for full day begins at 2:50pm.
- **Campers may only be dropped off before 8:45 a.m. and picked up after 3 p.m if they are enrolled in before / after care.**
- Apply bug spray and sunscreen at home, not during morning drop off as this could lead to a congested parking lot.
- If someone other than those listed on the Medical Form is picking up your child, you **MUST** let the camp director or the office know in advance and **in writing**.
- If you will be dropping your child off after 9:15am, please bring your camper to the office.
- If you are picking your child up from camp early, we need to know in advance, in writing, as it could be a field trip day. We will do our best to have your child ready for you...should they be on a trip, we will coordinate at the time of request.
- Location specific parking
 - If at Chandler Mill, please park in the lot at the Chandler Mill Nature Preserve. Counselors will be visible from the lot.
 - If at Myrick, please follow staff directing traffic to parking field. Tents will be labelled with age groups. Parents may park their cars and walk their campers to their tents to sign in with their counselor.

Field Trips (Waivers And Transportation)

- Waivers for field trips will be shared with families the first day of camp session.
- Campers participating in off-site field trips will be transported by Krapf Busing.
- All water trips, except SUP, will be provided by Northbrook Canoe Company. All Northbrook waivers are due by Friday, May 30th.
 - All 6 - 7s at the Myrick Conservation Center will be going to Shaw's Bridge Picnic Park and playing in the Brandywine Creek
 - All 6 - 7s at the Chandler Mill Nature Preserve will be playing in the Red Clay Creek onsite – no waiver needed
 - All 8 - 9s will go tubing – campers must be comfortable in water over their head
 - All 10 - 11s will go canoeing
 - All 12 – 15s will go kayaking

Inclement Weather And Emergency Plan

- BRC programs run rain or shine. In the event of a weather emergency or cancellation of camp, BRC staff will contact parent/guardian. Our priority is the safety of your children.
- Please note that trips on the Brandywine Creek may be shortened or cancelled due to high water levels or inclement weather. All efforts will be made to reschedule a trip if it is cancelled. No refunds will be issued if cancelled.

Lateness And Absences

- The camp day begins at 9:00 AM. If your child will be absent or late, please call BRC at 610-793-1090 prior to 9:00 AM and leave a message.
- There are no refunds for absences.
- It is best that we know a day ahead if a child has an appointment due to our field trip schedules.

If your child is late, we cannot guarantee that they will be able to go on the scheduled field trips.

Medical Forms, Medications And Procedures

- Completed medical forms and liability waivers must be on file at the Myrick Conservation Center office by Friday, May 30th. Failure to do so will result in forfeiture of your child's place at camp.
- In cases which appear to be minor in nature, first aid will be administered on the premises; in cases which appear serious, the staff will make every effort to carry out the instructions as given on the medical health & informed consent form.
- Please indicate all allergens your child has, the severity of reaction, and action(s) to be taken.
- If adequate emergency instructions are not supplied, or if they cannot be followed at the time of emergency, BRC staff will act according to their best judgement.
- Minor accidents or incidents will be communicated to parents/guardians at pick up.
- Parent/guardian will be contacted immediately for more serious incidents.
- If your child is prescribed any medication, please bring it to camp the first day in a baggie with their name written on it in permanent marker (this includes EpiPens, inhalers, or other daily medications). During check in, please submit to BRC staff. **All medications will remain at camp during the week and will be returned on Friday.**

Membership

- Camper families must maintain a valid Family membership (\$60 level), not only at member registration signup (February 1st), but through the end of their child's camp.
- You are not required to hold a membership to register for camp, however, non-member registration is March 1st and most camps are sold out by then.
- Memberships are non-refundable if your child does not get into camp.
- Families will be notified by phone call and/or email of any pending membership expirations during the registration verification process.
- Failure to renew membership by the start of your child's week(s) at camp may result in forfeiture of camp registration.
- BRC staff will continue to monitor membership expirations at the beginning of each month.

Overnights & Cookouts

Cookouts are for age groups 8 and up – Thursday nights on select week(s)

- Pickup for all cookouts is at 8:00 p.m.

Overnights are for the 12-15 age group only – Thursday night on select week(s)

- Campers will be sleeping in the open air or in tents.
- In the event of inclement or severe weather, a decision will be made by Tuesday of that week to modify or cancel the program. There will be no partial refunds if cancelled due to the weather.

Packing checklist:

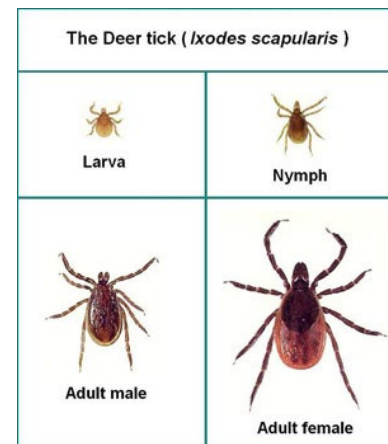
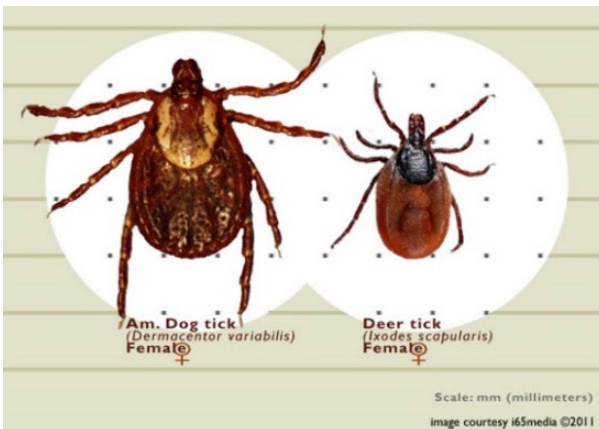
- ☐ Tent (campers will be able to share) – BRC will provide if camper does not have access to one
- ☐ Reusable plate, bowl, cup, and silverware
- ☐ Sleeping bag & pillow
- ☐ Sleeping pad (optional)
- ☐ Extra set of clothing
- ☐ Sweatshirt or fleece (optional for chilly mornings)
- ☐ Bathing suit & towel
- ☐ Shoes that can get wet
- ☐ Sneakers or hiking boots
- ☐ Hat
- ☐ Insect repellent & sunscreen
- ☐ Flashlight or headlamp with fresh batteries
- ☐ Reusable water bottle
- ☐ Toothbrush & toothpaste
- ☐ Pack a lunch for Thursday that does not need to be refrigerated. We will provide campfire snacks, Thursday dinner, and Friday breakfast and lunch

Photo Release

- We reserve the right to use any photos/video/artwork of program participants to promote our mission unless otherwise notified in writing.

Ticks And Poison Ivy

- Deer ticks may carry Lyme Disease, which can be transmitted if the tick has been attached for more than 12 hours, dog and wood ticks do not carry Lyme Disease.
- If your camper is bit by a tick while at camp, we will circle the bite area, attempt to save the tick, and notify at pickup.
- At your discretion, use insect repellent on your camper before camp and check them for ticks after camp.
- Remove a tick with tweezers by pulling the head firmly and steadily, do not twist.
- Dispose by placing the tick in alcohol or between 2 pieces of tape.
- Poison ivy: wash skin with dish soap and do not use moisturizer. Also wash anything else that may have come in contact with the ivy.
- Use anti-itch cream or baking soda-witch hazel paste on rash.



What To Bring To Camp

- Extra clothes (shirt, shorts / pants, underwear, socks)
- Extra shoes (water shoes or old sneakers)
- Bathing suit and towel (4-5 year olds every day)
- Plastic bag for wet clothes
- Waterproof jacket
- **Reusable water bottle** – no single use bottles
- Packed lunch (or only a snack for 4-5 y/o half sessions)
 - In an effort to reduce waste, please pack your camper's lunch in a reusable lunchbox - no paper or plastic bags.
 - Please try to pack your camper's lunch so that all components can be composted, recycled or reused.

What To Leave At Home

- Anything valuable or breakable
- Pocket knives or other sharp instruments
- Electronics
- **The use of cell phones is not permitted during camp hours, including overnight camping trips. Staff have the right to confiscate phones at any time.**
- Bathing suits or body suits with snaps. Staff is not permitted to assist campers in helping with snaps.

